

Installation Notes for Pastoral Care 11

Pastoral Care 11 has been built on the solid foundation, which its predecessor PC10 established.

Best Installation Environment

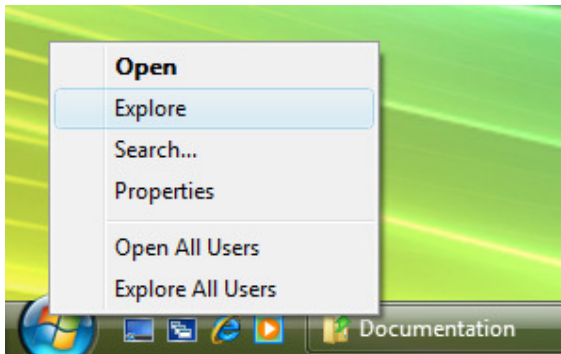
In all cases, when installing Pastoral Care, the following points are recommended for the most hassle free installation. (You can try without doing this, but we have found the following conditions should exist for best results)

- Reboot your computer before installing Pastoral Care
- Close any virus scanners and other software that starts automatically by right clicking on the icon on your start bar and choosing Exit or Close etc.(See Below)
- Don't worry if you can't close everything

Installing / Upgrading Pastoral Care

Pastoral Care 11 installs in a separate folder to your earlier versions, so it is completely safe to install even though you may have previous versions of Pastoral Care. Follow these simple steps to install version 11. If the Pastoral Care setup program starts automatically after you place the CD in your drive then jump to step 5.

1. Insert your CD into your CD drive
2. Start your windows explorer (right click on the Start Button on your desktop and choose Explore.
- 3.



4. Browse to your CD-ROM drive in the explorer and double click on the SETUP program on the CD. The Setup program has an Icon as show below.



5. Follow all instructions as presented to you.
6. When asked, you have the option to install additional features; we recommend that you install all features of Pastoral Care for the most benefit.
7. After installing, when you start Pastoral Care, you will be prompted for your Serial Key, which is found within your installation box.

8. The Pastoral Care installation program will install the manual to be read using the Adobe Reader. If you are yet to have the Adobe reader program installed on your computer you can download the latest edition for free from the internet (www.adobe.com).

Upgrading

To upgrade from a previous version do the following

1. Install Pastoral Care as required (details above)
2. Select your Start button and choose “Programs” – “Pastoral Care 11” – “Pastoral Care Conversion Program”
3. The conversion program is loaded.
4. Use the Step By Step wizard interface and answer all questions.
5. After selecting all options as required for your church, press the Begin Conversion.

For users upgrading from Pastoral Care 9re and below on Windows 7 or Vista

If you are running a Windows 7 or Vista then you will need to install Pastoral Care 11 on the computer which has the previous version of Pastoral Care as all versions from PC9re and below will not work on Windows 7 or Vista. After using the conversion program to convert your data from the previous edition to Pastoral Care 11 format then enter Pastoral Care 11 and use its internal backup program (Main Menu – Utilities Tab – Backup Data) to create a backup file which can then be loaded on the Pastoral Care 11 version installed on the Windows 7 or Vista computer via the internal Pastoral Care restore program. (Main Menu – Utilities Tab – Restore Data)

Network Installations

Pastoral Care is a complete networked solution. Please read the network installation file found on this CD completely before attempting a network installation. All computers that are going to be using Pastoral Care on the network must firstly have Pastoral Care installed using this standalone installation document before you move to the Network Installation document. If you are intending to run Pastoral Care on a network then this will need to be done before converting your previous Pastoral Care data over to the new edition.